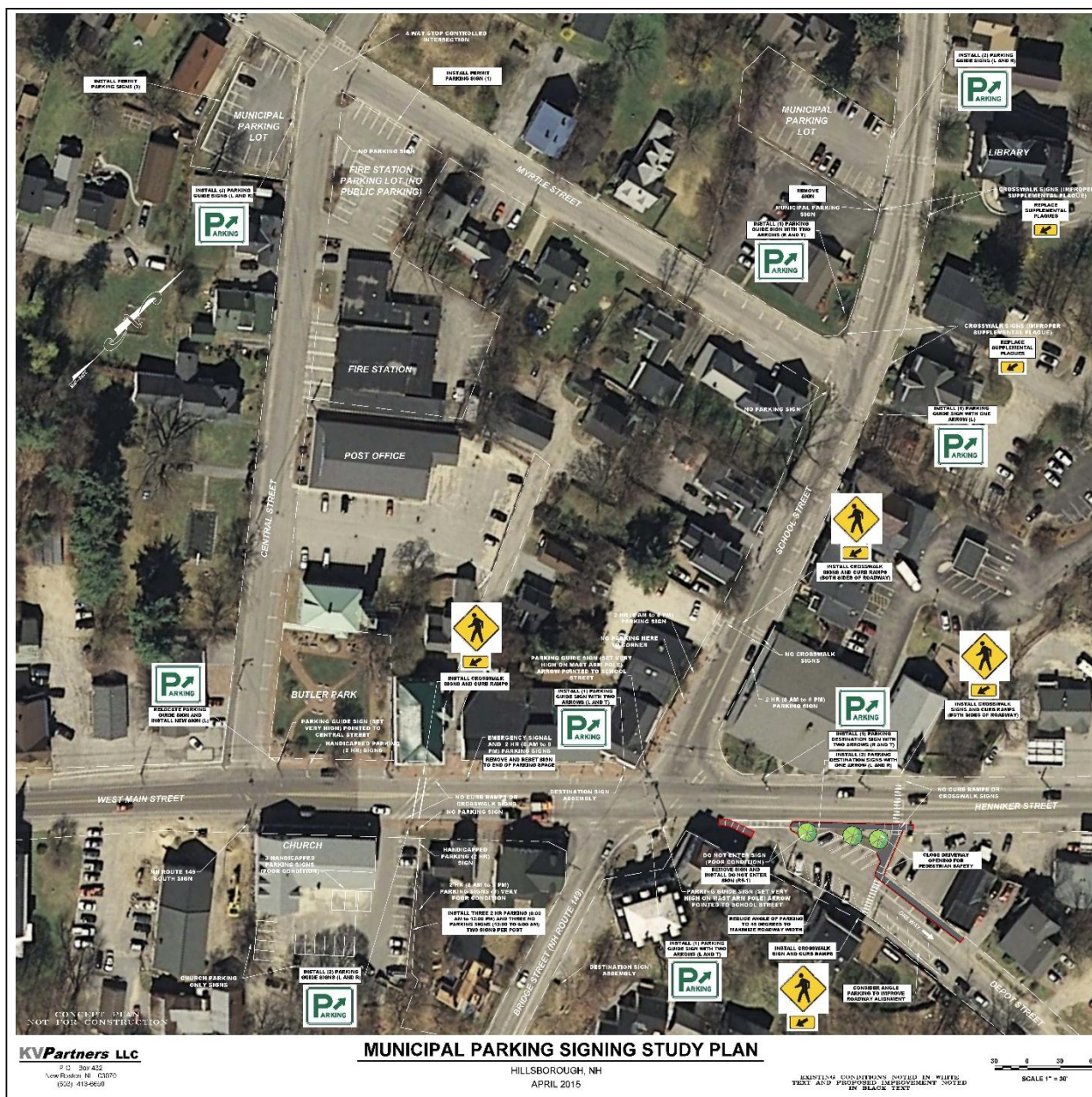






DRAFT for October 3, 2018 Public Hearing

APPENDIX A

Municipal Parking Signing Study Plan



SIGN SUMMARY SHEET (PARKING SIGNS ONLY)

SIGN DESIGNATION	TEXT	SYMBOL	TEXT COLOR	BACKGROUND COLOR	SIZE	NUMBER	SQUARE FEET
R7-2	NO PARKING - 12:00 PM TO 6:00 AM		RED	WHITE	12" x 18"	3	4.5
R7-5	2 HOUR PARKING - 6:00 AM TO 12:00 PM		RED	WHITE	12" x 18"	3	4.5
	PARKING BY PERMIT ONLY		BLACK	WHITE	12" x 18"	4	6.0
D4-1L	PARKING		GREEN	WHITE	24" x 36"	5	30.0
D4-1R	PARKING		GREEN	WHITE	24" x 36"	4	24.0
D4-1 RT	PARKING		GREEN	WHITE	24" x 36"	2	12.0
D4-1 LT	PARKING		GREEN	WHITE	24" x 36"	2	12.0

REVISIONS					KVPartners LLC P.O. Box 432 New Boston, NH 03070 (603) 413-6650	SCALE AS NOTED		MUNICIPAL PARKING SIGNING STUDY HILLSBOROUGH, NEW HAMPSHIRE	SHEET NO. SLS
NUMBER	DATE	BY	DESCRIPTION						
						DESIGNED BY:	MSV	SIGN LEGEND AND SUMMARY	NOVEMBER 2016
						DRAWN BY:	MSV		
						CHECKED BY:			