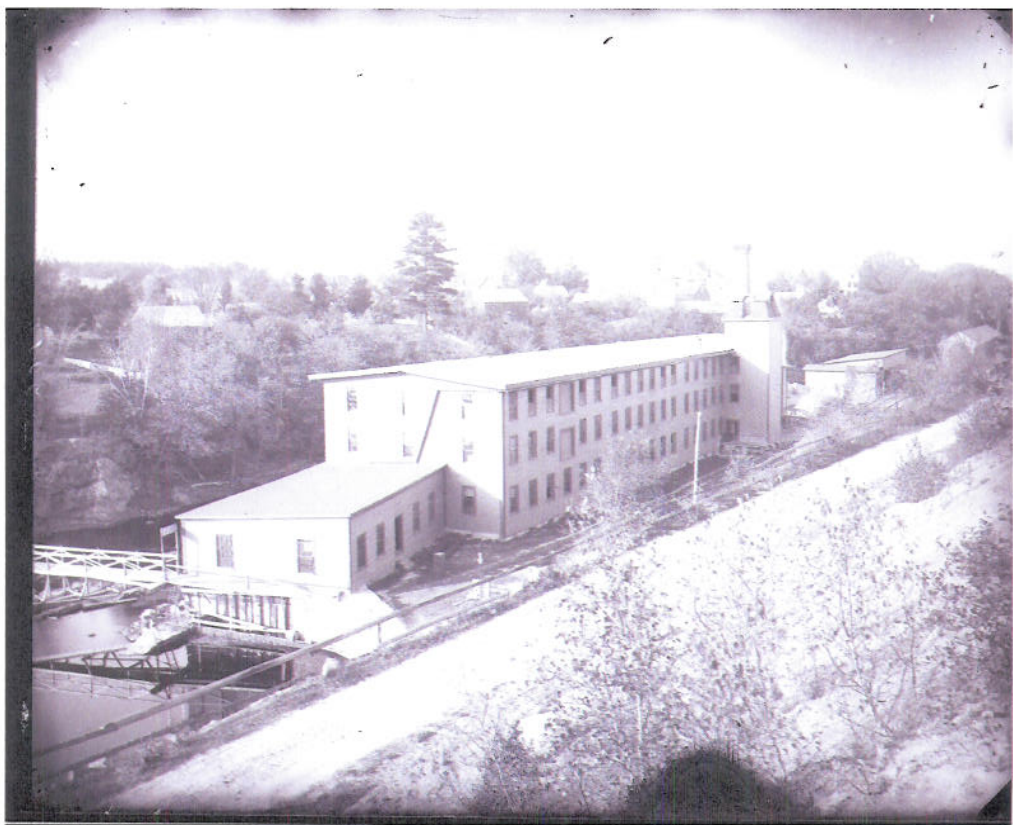


**Historical (Old Mill)**









**Current Conditions  
(June and October 2006)**





**Photo 15** – Area on north side of Boiler House/Room (October 2006).



**Photo 16** – View looking toward Warehouse Building #2 (October 2006).





**Photo 17** – View looking into northern portion of Former Mill Building Foundation (October 2006).



**Photo 18** – View of east side of Warehouse Building #2 (October 2006).





**Photo 19 -** View of cement (Transite®) wall boards inside Warehouse Building#2 (October 2006).



**Photo 20 –** View of interior (basement) of Warehouse Building #2 (October 2006).





**Photo 21** - View of interior (basement) of Warehouse Building #2 (October 2006).