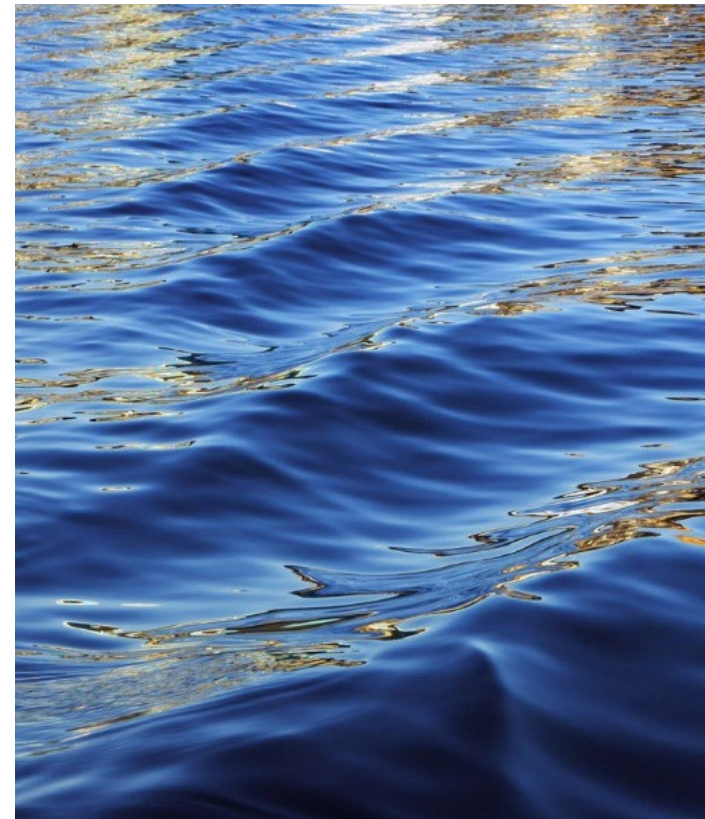




Town of Hillsborough, NH

Presentation by Economic Development Commission

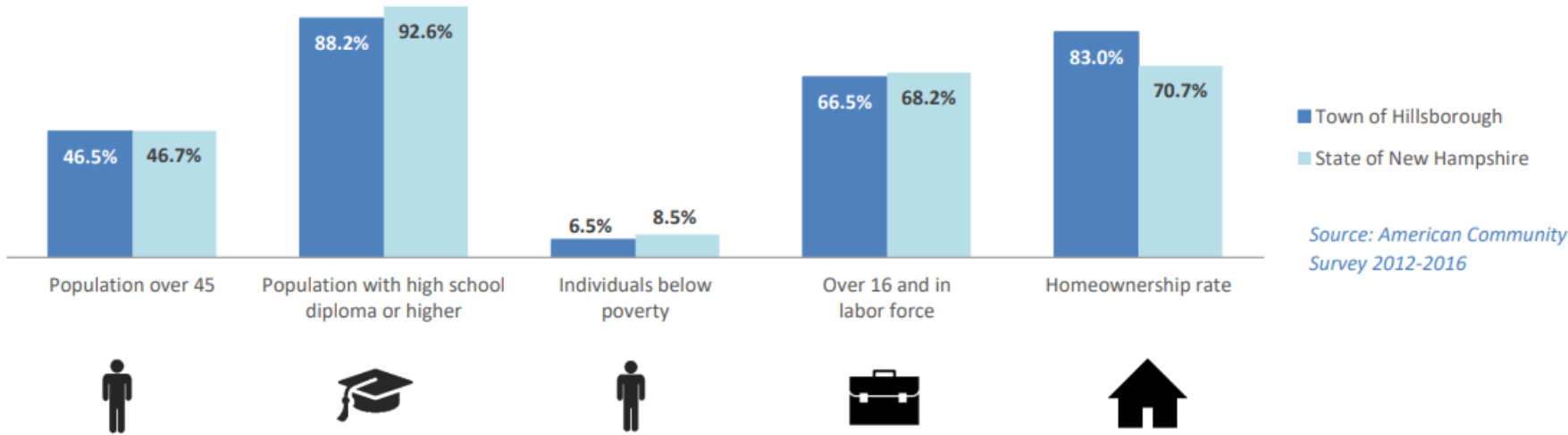


Our Community

The Hillsborough community is poised for continued growth while remaining committed to our heritage. The biggest asset Hillsborough has to offer any potential business or resident is our community.



KEY COMPARISON AND OVERVIEW



A Beautiful Place to Live & Work

- Hillsborough is a vibrant community favored by residents and visitors for its diverse and walkable downtown, vast natural resources, recreation opportunities, rural and historic heritage, and a high quality of life.
- Hillsborough is growing while maintaining it's close-knit community charm.
- Provides an economic hub for local smaller towns while offering a great commuter location to near-by cities and towns.



Photo: Maryann Cheung

Photo: Maryann Cheung

Exceptional Natural Resources

Hillsborough is Rich in Natural Amenities

- Hiking
- Fishing
- Boating
- Fox State Forest
- River Walk
- Public Beaches
- Hunting
- Grimes Field
- Butler Park
- Pats Peak, Crotched Mountain
- Sunapee Lake & Mountain



Photo: Maryann Cheung

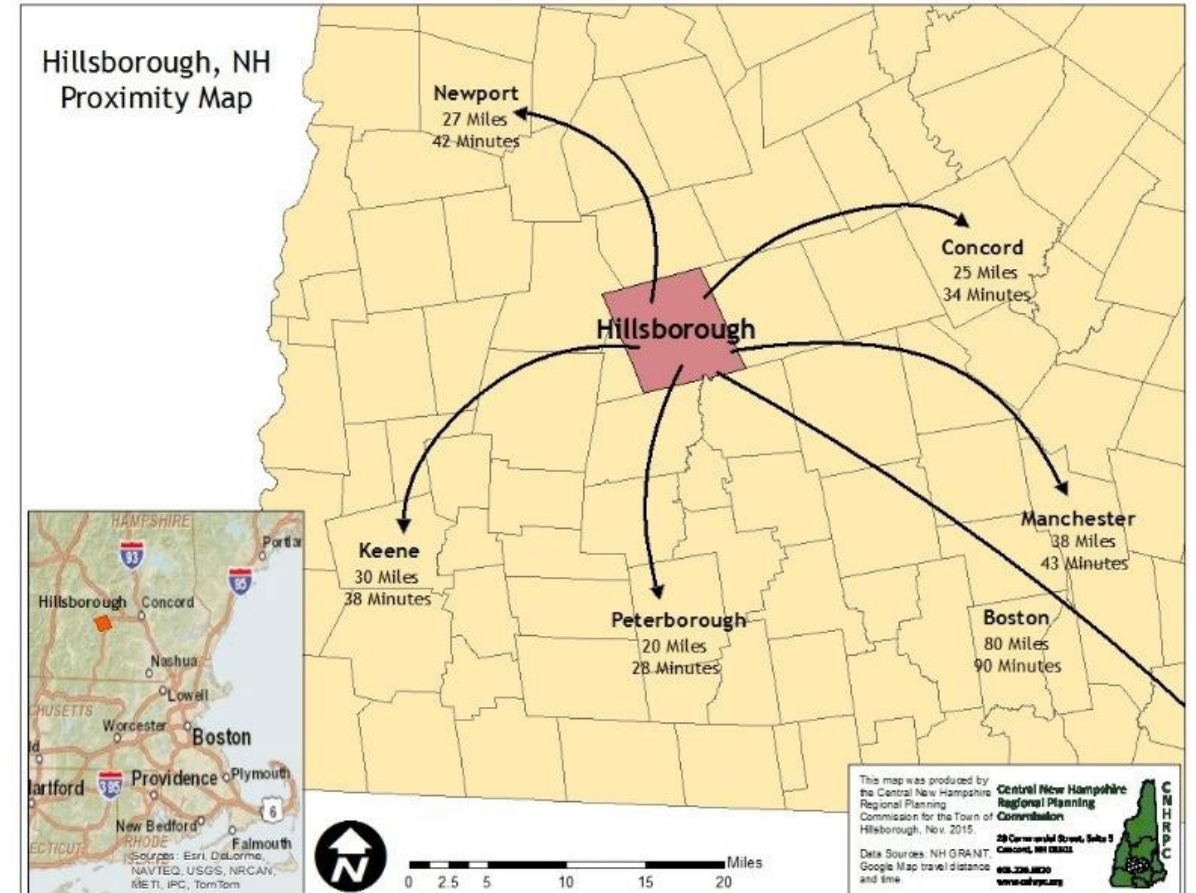
Workforce

- New Hampshire has one of the highest percentages of college-educated citizens in the nation and ranks consistently high for the rate of people employed in science and technology.
- Strong partnerships between community colleges, state universities and industries ensure customized training programs, developing strategic pipelines of talent that maintain our companies' competitiveness.
- 2020 Census found 5939 residents. American Community Survey indicates there are 2997 residents between the age of 16-64 who were employed working a median hours of 39.9.
- According to New Hampshire Economic and Labor Market Information Bureau (ELMI), the percent of civilians in the New Hampshire labor force has increased between 2010 and 2017 by 1.1%, with an overall increase in the labor force of nearly 8,200 people.



The Ideal Location

- Located between Keene and Concord, NH. Close proximity to Manchester & Peterborough, NH.
- Manchester-Boston Regional Airport
- Full-service local airports in Nashua, Concord, Laconia and Lebanon; charter service from Pease International Airport; international service from Boston Logan
- Logistics: New Hampshire is the northern New England hub for UPS and FedEx.



Ideal for Businesses

- Knowledgeable and supportive planning administrator able to walk developers through the Planning and Zoning Process.
- Involved Town Administration willing and able to assist.
- Active local Chamber of Commerce.
- Economic Development Commission.
- Local workforce available, as well as a great commuter location.



Small Town Big Future
Hillsborough
NEW HAMPSHIRE



Town of Hillsborough
Office of Community Planning
Robyn Payson, Planning Director



Town Rich in History

- Franklin Pierce Homestead
- Stone Arch Bridges
- Historic District
- Heritage Museum



Photo: Maryann Cheung



Community Investment

- Community Revitalization Tax Relief Incentive (RSA 79:E)
- Tax Incentive for businesses expanding or revitalizing. (RSA 72:81)
- Main Street Sidewalk project
- Woods Woolen Mill Reclamation and Revitalization project



Taxation

The US Tax Foundation ranks New Hampshire's business tax climate 7th nationally and 1st in New England.

New Hampshire has:

- No broad base personal income tax
- No sales tax
- No internet sales tax
- No inventory tax
- No capital gains tax
- No professional service tax

taxfoundation.org





Education

Nearby New England College and many colleges within 1 hour

Hillsborough Deering Cooperative provides education for grades K-12

Youth Services available

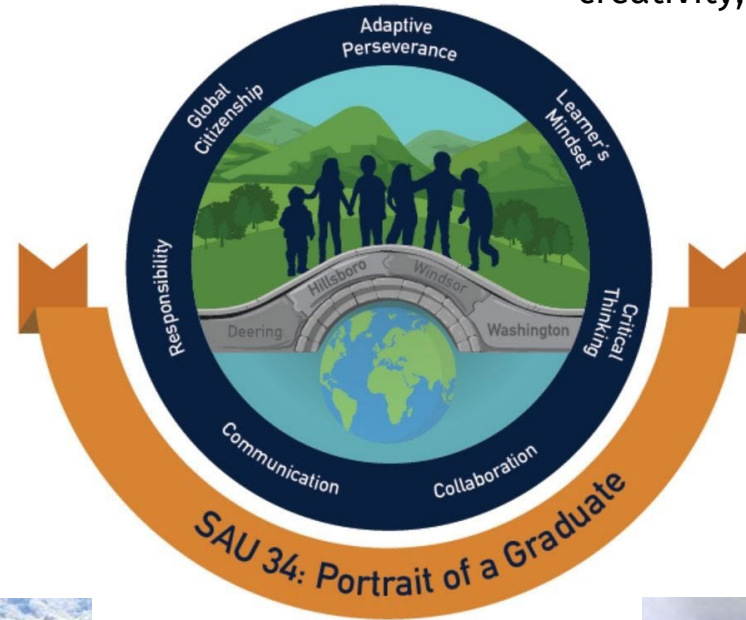
Local licensed childcare facilities

The Hillsboro-Deering Cooperative School District

The Hillsboro-Deering Cooperative School District was formed in 1954. Our three schools are located on the 30-acre main campus, located on School Street, just north of the main intersection of Main Street and School Street in Hillsboro, NH.

We also offer a high school alternative program, located in West Deering. H-DHS students also have access to programs through the Concord Regional Technical Center, with busing provided daily.

SAU # 34 Mission Statement: In partnership with our communities and families, SAU 34 empowers all students to grow in safe and caring learning environments that inspire creativity, curiosity, and connection.



SAU #34 Portrait of a Graduate

SAU # 34 Strategic Plan

The SAU # 34 Strategic Plan identifies three priority areas:

- Culture
- Learning Environment
- Student Success



SAU #34 is the School Administrative Unit for The Hillsboro-Deering, Washington, and Windsor School Districts



Hillsboro-Deering Elementary School serves students from preschool through grade five.



Hillsboro-Deering Middle School serves students grades six to eight.



Hillsboro-Deering High School serves students grades nine – twelve.

SAU #34

The School Administrative Unit for The Hillsboro-Deering, Washington, and Windsor School Districts



The school districts in SAU #34 serve about 1,100 students with the goal of providing a quality education for each child. The Hillsboro-Deering Cooperative School District was formed in 1954 and also serves students from the towns of Washington and Windsor. The 30-acre main campus is located on School Street, just north of the main intersection of Main Street and School Street in Hillsboro, NH. Washington Elementary School, built in 1992, is located in picturesque Washington, NH just 10 miles northwest of Hillsboro, up route 31.

[SAU #34 Website](#)

[SAU #34 on Facebook](#)

We are proud of our 5 schools and the opportunities they offer. We have 2 elementary schools, 1 middle school, 1 high school, including a high school alternative program located in West Deering. The entire SAU spans a total of 132.2 square miles, made up of mostly rural areas.

The School Administrative Unit (SAU) office is housed on the third floor of the Hillsboro-Deering Elementary School and provides central office services including the Superintendent of Schools, Director of Student Support Services, Director of Curriculum, Instruction, and Assessment, Business Administrator, Human Resources, Payroll, and Accounts Payable.

Hillsboro-Deering Elementary School

Providing a caring, safe, and academically rigorous learning environment for our entire learning community.



H-DES serves approximately 450 students from Preschool through Grade 5.

[H-DES Website](#)

[Hillsboro-Deering Elementary School on Facebook](#)



Kid Adventures

An independent, non-profit provides Before and After School Care and Summer Programming for elementary school aged children.

[Kid Adventure on Facebook](#)

Program Director: Cathy Bennett

cbennett@hdsd.org

603-464-1220



Hillsboro-Deering Middle School

Committed to personalizing student learning in an environment which promotes respect, cooperation and honesty.

[H-DMS Website](#)

[Hillsboro-Deering Middle School on Facebook](#)



H-DMS serves approximately 240 students in Grades Six through Eight



Hillsboro-Deering High School

HDHS commits to building community, providing a personalized education, encouraging continual progress, and inspiring purposeful lives.



[H-DHS Website](#)

[Hillsboro-Deering High School on Facebook](#)

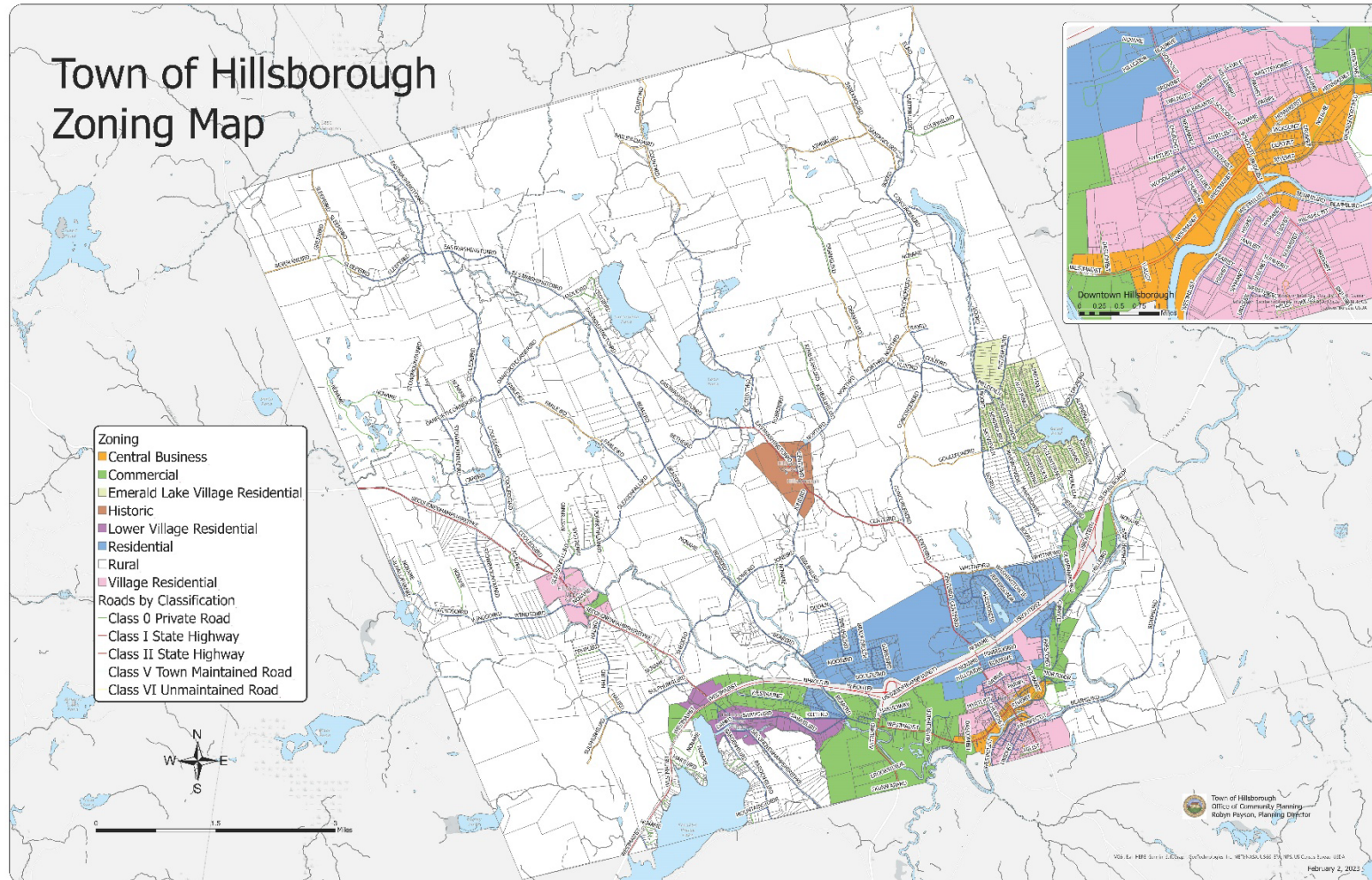


H-DHS serves approximately 365 students in Grades Nine through Twelve.

Hillsboro-Deering High School offers multiple and flexible pathways preparing every student to be college and/or career ready by the end Grade 12. Courses and pathways are designed for students to challenge themselves academically, while building their skills to be successful in their post-secondary endeavors. All courses and pathways lead to a Hillsboro-Deering High School Diploma.

[H-DHS Program of Studies](#)

Current Businesses



- High Tech and Industrial
- Retail
- Restaurants
- Garden Centers
- Hardware Stores
- Automotive Shops
- Dealerships
- Dentists
- Medical
- Bed and Breakfasts
- Event Venues
- Electronics
- Pharmacies
- Self Storage
- Supermarket
- Liquor & Wine Outlet
- Gifts/Artisan Shops
- Beauty Salons/Barber Shops
- Banks
- Golf Course

Hillsborough Has it All

- Prime location full of potential
- A great place to work and play
- A town poised for development
- Full of Educational opportunities
- A town rich in history
- Town staff committed to working proactively with developers through the Planning and Zoning process
- An active Chamber of Commerce



Small Town Big Future
Hillsborough
NEW HAMPSHIRE